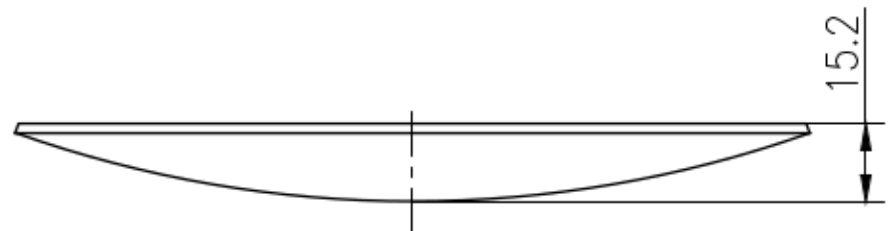
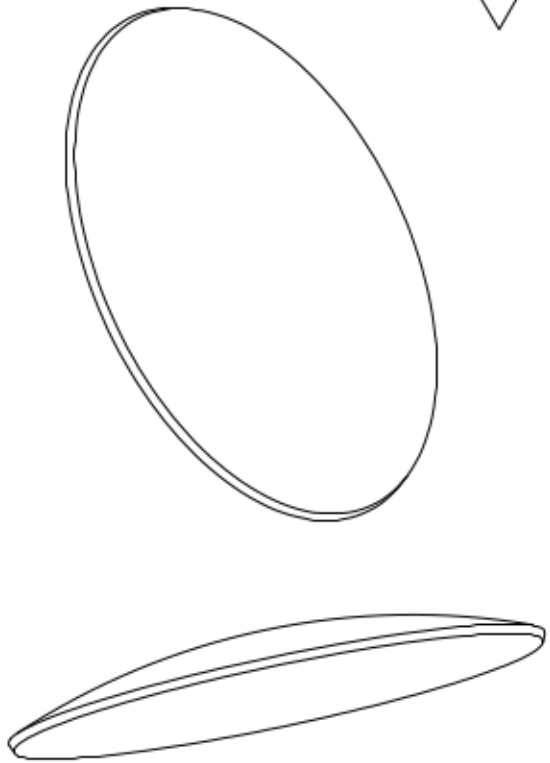
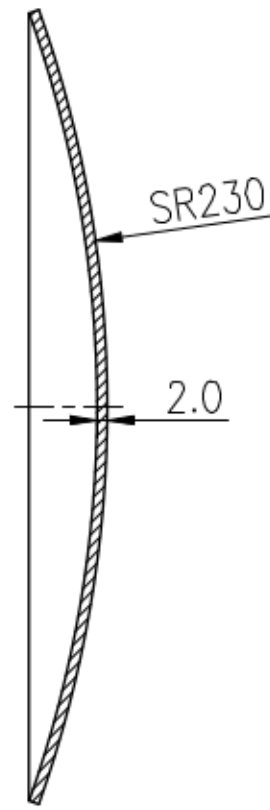
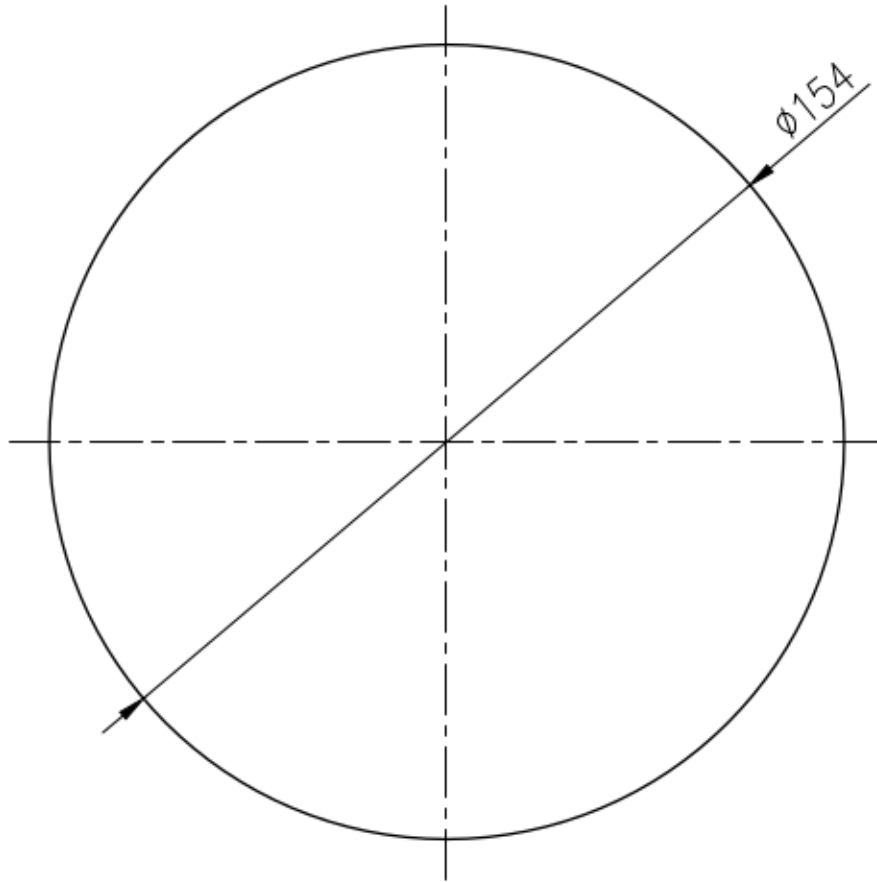


3.2



							10	>10-50	>50-120	>120-400
							±1°	±30'	±20'	±10'
	0.5-6	>6-30	>30-120	>120-400	>400-1000	>1000-2000	AISI 316			
	±0.1	±0.2	±0.3	±0.5	±0.8	±1.2				
							1:1			
							169.154.15.04.H.RAW			